

74749-60, 74749-61

Pneumatic visual indicators

1/4 NPT, G 1/4

Indicate the presence or absence of a pneumatic signal

Contrasting colour combinations for positive identification


Technical features
Medium:

Compressed air, filtered, dry or lubricated

Pressure ranges:

see table below

Port size:

1/4 NPT, G 1/4

Fluid/Ambient temperature:

-40 ... +80°C (0 ... +176°F)

Air supply must be dry enough to avoid ice formation at temperatures below +2°C (+35°F)

Materials

Body: stainless steel with clear plastic sleeve

Spring: stainless steel

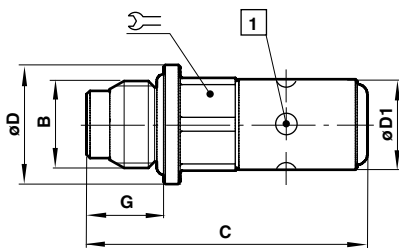
Elastomers: low temperature nitrile

Technical data

Symbol	Port size	Nominal operation pressure range (bar)	On rising pressure - Colour change begins at; (bar)	Fully changed at; (bar)	On decreasing pressure - Colour change begins at; (bar)	Fully changed at; (bar)	Colours		Model
							Normal	Actuated	
	1/4 NPT	1 ... 10	1,8 (± 0,5)	3,0 (± 0,5)	2,0 (± 0,5)	1,2 (± 0,5)	Red	Green	74749-60
	G 1/4	1 ... 10	1,8 (± 0,5)	3,0 (± 0,5)	2,0 (± 0,5)	1,2 (± 0,5)	Red	Green	74749-61

Dimensions

Dimensions shown in mm



1 Visual colour
Red (unactuated)
Green (actuated)

B	C	ø D	ø D1	G		Weight (g)	Model
G 1/4	42	18	14	11,5	14	35	74749-61
1/4 NPT	42	18	14	16	14	35	74749-60