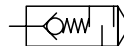


0613422, 0613423

 Exhaust guard
 1/4" & 1/2"

- Suitable for outdoor use
- Protects against contamination and moisture penetration
- Compact, efficient, lightweight
- Can be screwed directly into exhaust ports
- Suitable for BSP or NPT thread



Technical features

Medium:

Lubricated or non-lubricated compressed air, inert gases

Operation:

The non-return function protects the spring chamber of pneumatic actuators in particular against aggressive ambient air.

Operating pressure:

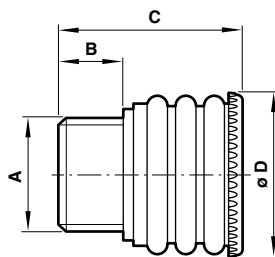
 10 bar max. (145 psi)
 Operating temperature:
 -55 ... +80°C (-67 ... +176°F)

Materials

 Housing: POM
 'O'-rings: VMQ

Dimensions

Dimensions shown in mm



Dimensions shown in mm

A	Suitable for	B	C	Ø D	Weight	Model
1/4"	G1/4, 1/4 NPT	10	26,5	21	5 g	0613422
1/2"	G1/2, 1/2 NPT	12	33,5	29	11 g	0613423

Example of use

