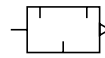


## T40

Quietaire sintered bronze silencers  
M5, 1/8" ... 1"

- Reduce the noise levels of pneumatic equipment
- Compact and efficient
- Screw directly into the exhaust port
- Prevent the ingress of dirt
- Shock and vibration resistant to EN 61373, Category 1, class A and B



### Technical features

**Medium:**

Compressed air, filtered, lubricated or non lubricated, vacuum, inert gases

**Operation:**

Exhaust silencer or inlet filter

**Operating pressure:**

10 bar (145 psi) maximum

**Mounting:**

Directly in exhaust or vent port

**Operating temperature:**

-40 ... +80°C (-40 ... +176°F)

Air supply must be dry enough to avoid ice formation at

temperatures below +2°C (+35°F)

**Materials**

Element: sintered bronze

Body: brass

### Technical data

Symbol	Port size	Flow factor		Continuous sound pressure level *2)		Weight		Model with ISO G-threads BSPP	Model with ISO R-threads BSPT
		Cv	Kv *1)	0,7 bar	6 bar	kg	lb		
	M5	0,2	0,21	56	70	0,004	0,009	T40M0500	-
	1/8"	0,54	0,53	66	75	0,01	0,022	T40C1800	T40B1800
	1/4"	1,6	1,34	68	78	0,02	0,044	T40C2800	T40B2800
	3/8"	3,5	2,98	75	84	0,045	0,099	T40C3800	T40B3800
	1/2"	5,1	4,47	75	88	0,07	0,154	T40C4800	T40B4800
	3/4"	9	7,88	87	96	0,13	0,287	T40C6800	T40B6800
	1"	11,6	10,22	93	100	0,2	0,441	T40C8800	T40B8800

\*1) Measured in m<sup>3</sup>/h

\*2) SPL in dBA at 1 m from unit

### Option selector

T40\*\*\*00

Thread form	Substitute
Metric	A
ISO-BSPT	B
ISO-BSPP	C

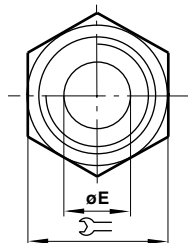
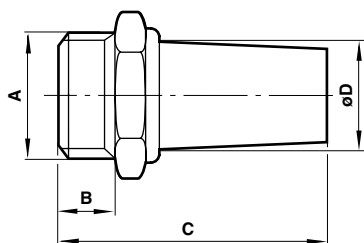
Port size	Substitute
M5	05
1/8"	18
1/4"	28
3/8"	38
1/2"	48
3/4"	68
1"	88

# T40

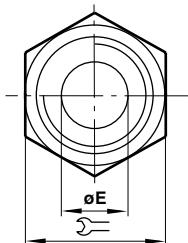
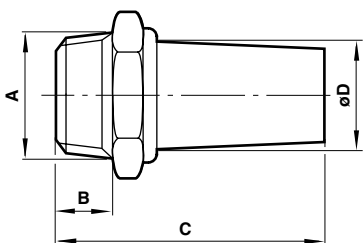
Quietaire sintered bronze silencers  
M5, 1/8" ... 1"

## Dimensions

Dimensions shown in mm  
Projection/First angle



A	B	C	Ø D	Ø E		Model
M5	5	20	5	2,5	7	T40M0500
G1/8B	6	24	9,5	6	13	T40C1800
G1/4B	8	33	12	8,5	17	T40C2800
G3/8B	10	44	17	12	22	T40C3800
G1/2B	12	56	20	14,5	27	T40C4800
G3/4B	14	80	26	19	32	T40C6800
G1B	16	82	31	25	41	T40C8800



A	B	C	Ø D	Ø E		Model
R1/8	9,5	27,5	9,5	6	13	T40B1800
R1/4	11	36	12	8,5	17	T40B2800
R3/8	12,5	46,5	17	12	22	T40B3800
R1/2	16	60	20	14,5	27	T40B4800
R3/4	19	85	26	19	32	T40B6800
R1	22,5	88,5	31	25	41	T40B8800